




Family Safeguarding Model (FSM)





- 
- **What is the Family Safeguarding Model (FSM)?**
 - **What are the benefits?**
 - **What is the impact?**
 - **What people think of the model**

Family Safeguarding Model

Family Safeguarding is a **whole family approach** to working with children and families that supports parents to create **sustained change** for themselves and for their family.

Family Safeguarding takes a **multi-disciplinary approach** to working with families including Children and Families Social Workers and Family Support Practitioners, working alongside Adult Specialist Workers to provide help and support in relation to issues associated with **parental domestic abuse, substance misuse and mental ill-health**.

Family Safeguarding teams work with children **aged pre-birth to 17** where the issues relate to **abuse and neglect of the children by their families**.

The Centre for Family Safeguarding Practice

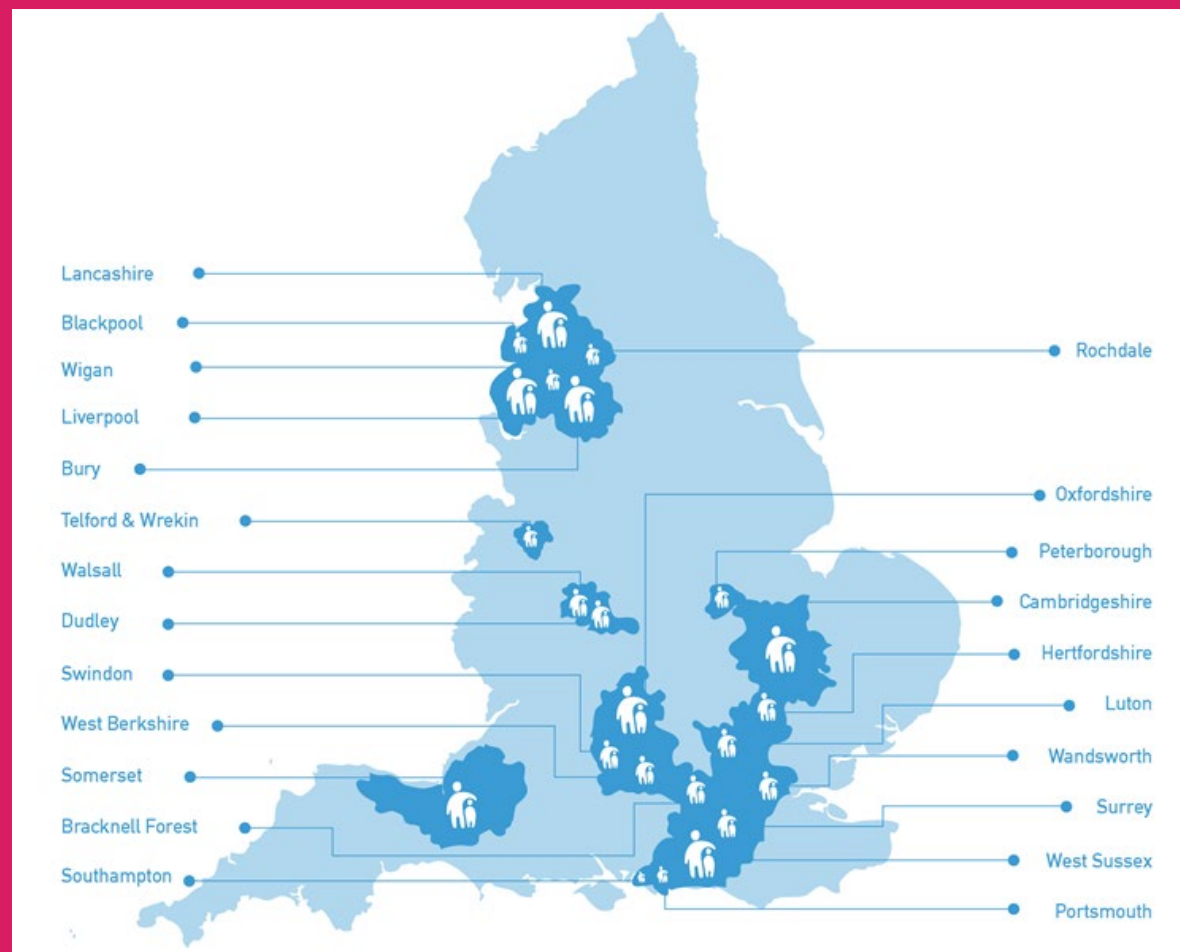


Hertfordshire County Council designed and put into practice the Family Safeguarding Model in 2015, following a successful bid to the Department for Education's (DfE) Innovation Programme.

The incredibly successful outcomes from the changes made in the first year were evidenced in an evaluation report commissioned by the DfE and published in 2017.

Following this success, currently 24 Local Authorities have adopted or are adopting Family Safeguarding as their chosen model of delivery.

Hertfordshire continue to support authorities through the Strengthening Families Protecting Children (SFPC) programme and as a Sector-led Improvement Partner (SLIP).





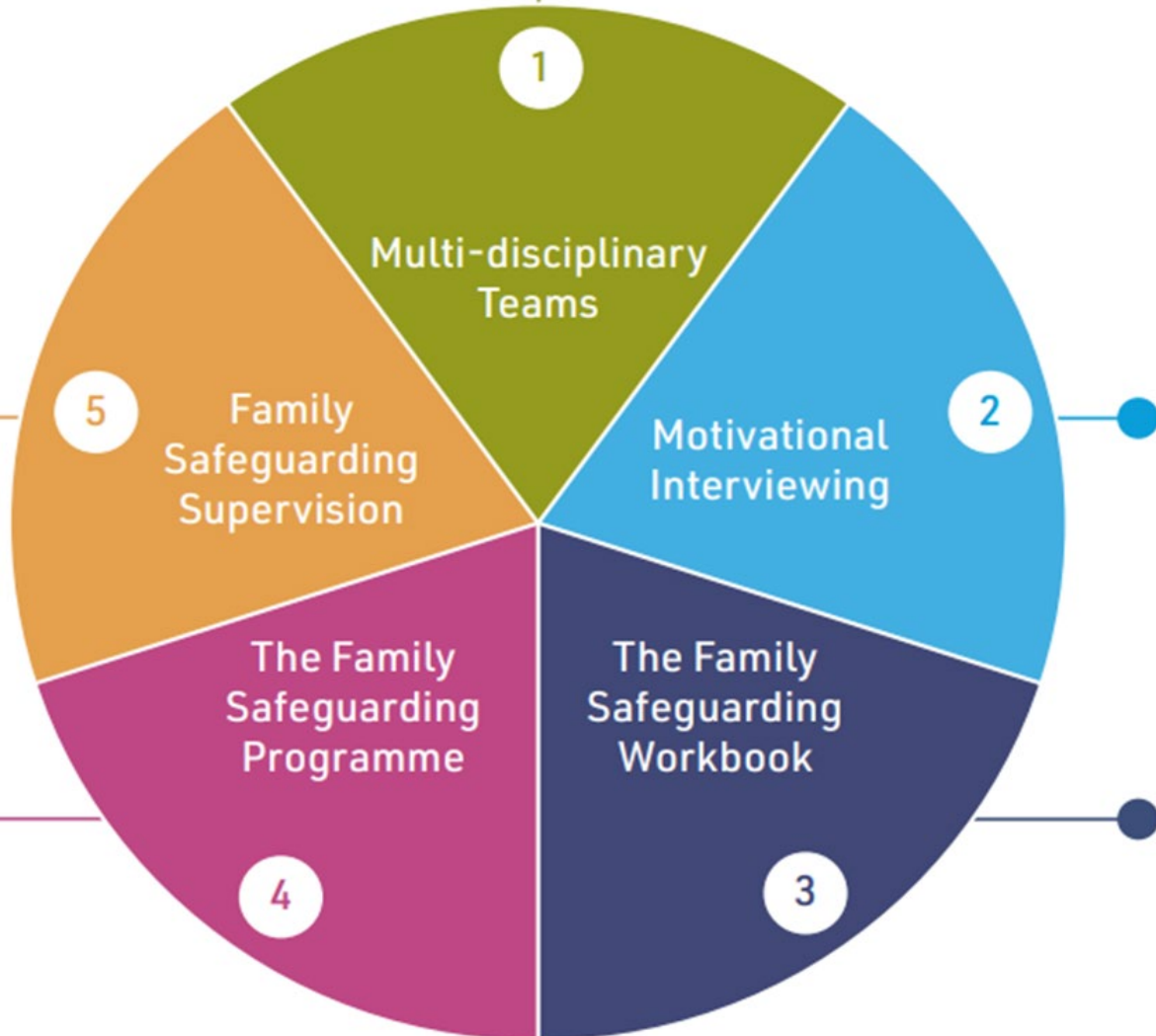
What is it?

A multi-disciplinary team approach - working **with** parents; providing help and support to create lasting change. Reducing bureaucracy to free up more time for purposeful direct work with families

Our Vision

To keep more children safe at home with their families

The 5 core components of FSM



Multi-disciplinary teams Provide support to the whole family to address their needs including specialist domestic abuse, mental health and substance misuse support

Motivational Interviewing A strengths-based framework to harness motivation to change, ensuring the same language is used across all professionals working with families

The Family Safeguarding Workbook An innovative recording mechanism open to the Family Safeguarding teams allowing shared, multi-agency recording, analysis and decision making

The Family Safeguarding Programme Provides a structure to working with the whole family and developing the family's skills

Family Safeguarding Supervision Involves all professionals to build a holistic view of needs and share responsibility for decision making

The multi-disciplinary team

The Multi-disciplinary Family Safeguarding Team encompasses professionals, specialist support workers and social workers, who share information, make collaborative decisions and work alongside each other to address families' needs.



Benefits of the Model

Reducing
likelihood of
abuse and neglect
in families

Fewer children
needing to be
in care or
adopted

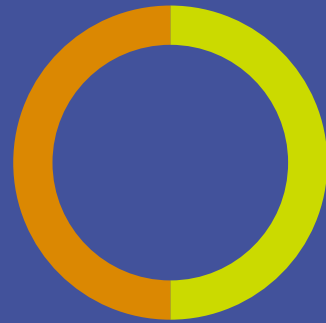
Families becoming
more resilient &
developing greater
confidence in their
skills

Impact of Family Safeguarding



50%

**Up to 50%
reduction in
children needing
a CP Plan**



50%

**Up to 50%
fewer Children
needing to
come into care**



60%

**Up to 60%
reduction in repeat
police call outs to
DA incidents**

What Ofsted says...

Positive feedback from Ofsted around the quality of partnership working for areas that have been inspected since adopting the model

What families say...

Positive feedback from families, including comments around feeling less worried to work with services, how they have brought people together to help, feeling like someone is listening and that practitioners really care.

What professionals say...

Professionals have commented: “When in a silo agency, you have a preconception in regard to other professionals practice, it’s been amazing working with all the different professionals.”

Impact of the FSM Model

What the Department for Education says...

There have been statistically significant reductions in looked after children numbers and/or Child Protection Plans in the two years following the introduction of Family Safeguarding. Police call-outs have reduced by up to two-thirds and there are signs that Family Safeguarding is reducing the frequency of unplanned, reactive mental health contacts amongst the adults it supports. The data available to the evaluation suggests that the financial case for Family Safeguarding is strong.” DfE 2020

Feedback from Evaluations

Hertfordshire 2020 -

A clear finding from this evaluation – Practitioner appetite, there is no desire to return to the previous ways of working.

Parents and carers that contributed to the evaluation usually became more receptive to the Family Safeguarding approach over time and recognised that they were being worked with and not done to.

Parents and carers placed great value on the availability of specialist support and in most cases feel that their chances of making lasting, positive change have improved.

Re-referral rates in Hertfordshire reduced significantly in the first two years of Family Safeguarding and have stayed broadly at that level in the subsequent two years.



Governance

Building for Brilliance (BfB) Programme Board:

Regular highlight reports will be produced and shared with the BfB Board showing key process and areas of concerns.

Workstream Groups: Workstream Groups lead on their part of the project plan. They report to the Project Manager, including reporting progress, highlights, risks, and delays. They should include relevant partner representatives as well as LA leads.

Southampton's Safeguarding Children's Partnership
FS Partnership Board
(Project Sponsor & Strategic Leaders)

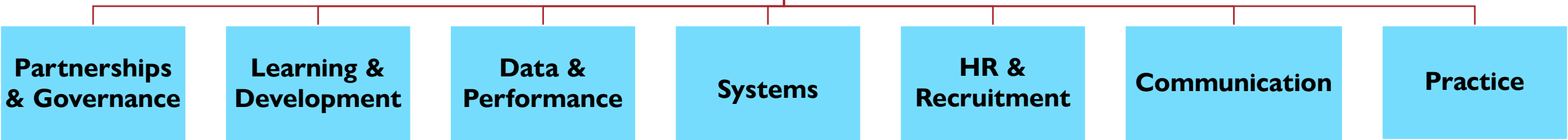
BfB Programme Board
(Project Sponsor, Project Manager & wider programme leads)

FS Operational Board
(Project Sponsor, Project Manager & Workstream leads)



Southampton's Safeguarding Children's Partnership: The Partnership Board has overall responsibility for programme delivery. It is made up of strategic decision makers from all relevant partner agencies.

The Operational Board: The Operational Board develops and implements the project plan and monitors progress on the plan. It receives highlight/ progress reports from the Project Manager and workstream leads. It identifies risks and project delays to report to the Partnership Board. Typically chaired by the LA Director of Children's Social Work.



Key Leaders



Robert Henderson

Executive Director Wellbeing
(Children & Learning)

Programme Sponsor, Building for Brilliance



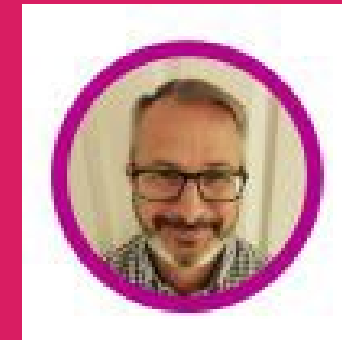
Steph Murray

Deputy Director, Children's Social Care and
Children and Families First
Transformation Lead, Family Safeguarding Model



Stuart Webb

Head of Quality Assurance
Transformation Lead, Family Safeguarding Model



Matt Jenkins

Head of Safeguarding
Project Sponsor, Family Safeguarding Model



Family Safeguarding

Thank you

